

HandPoint Retail 4.0

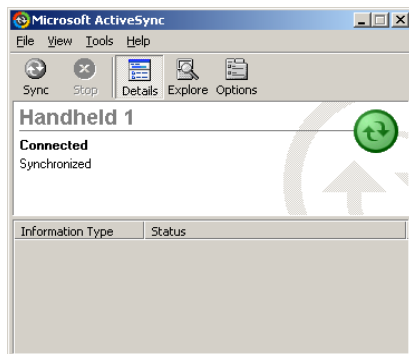
Configuring Your Pocket PC for Microsoft ActiveSync

There are 3 steps that have to be completed before you can use handPoint Retail on your Pocket PC. They are: Installing ActiveSync, Installing handPoint Retail and configuring the Retail Server.

Start by connecting the Pocket PC cradle to your PC and an electrical outlet and place your Pocket PC handheld in the cradle.

Installing Microsoft ActiveSync

1. Locate your ActiveSync installation file. Links to the installation file can be found on the handPoint Support site.
2. Double-click the installation file.
3. Follow the setup instructions on the screen and click **Next** to go on to the next steps.
4. When the ActiveSync setup is complete, it will scan for a mobile device. If your Pocket PC is in the cradle and the cradle is correctly connected to the PC, ActiveSync will locate it.
5. When ActiveSync has located the Pocket PC you are offered to **Set up a Partnership**. Selecting **Yes** is recommended when using handPoint Retail.
6. Your next step is to decide if you only want to have a partnership with the current computer or to have more than one partnership. Selecting **only one** computer is recommended when using handPoint Retail
7. Select the applications you want to synchronize information from. Select a check box to synchronize particular information and clear check box to stop synchronization. Then click **Next**.
8. Installation is now complete. To exit the installation wizard click **Finish**.



You are now ready to install **handPoint Retail** on your Pocket PC.

Installing handPoint Retail on the Handheld

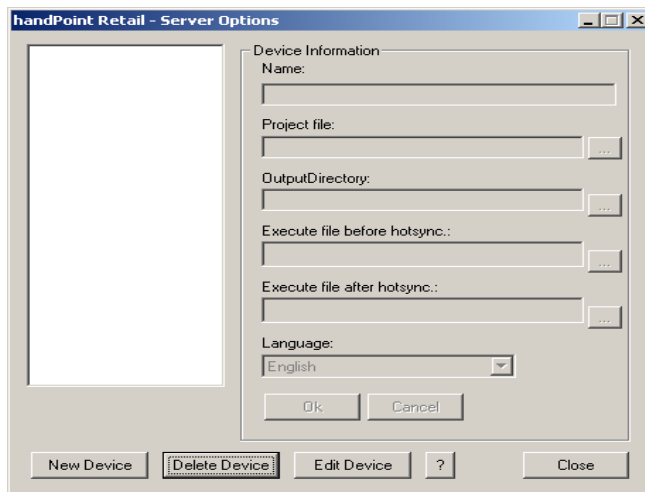
1. Place the Pocket PC handheld in the cradle to establish communication between the PC and the handheld.
2. Go to the **Start** menu (bottom left) on the PC and select **Programs** and then **handPoint** and **Retail** from the program listings.
3. Click on **Install handPoint Retail on Pocket PC**.

4. Follow the instructions on the screen to install handPoint Retail. Selecting **Yes** when asked to install in the default directory is recommended. The installation process may take a few minutes.
5. The wizard advises you to check the screen of your mobile device because there might be additional steps necessary to complete the installation. Click **Ok**.
6. If there are additional steps on the handheld, finish them by following the instructions on the handheld's screen.

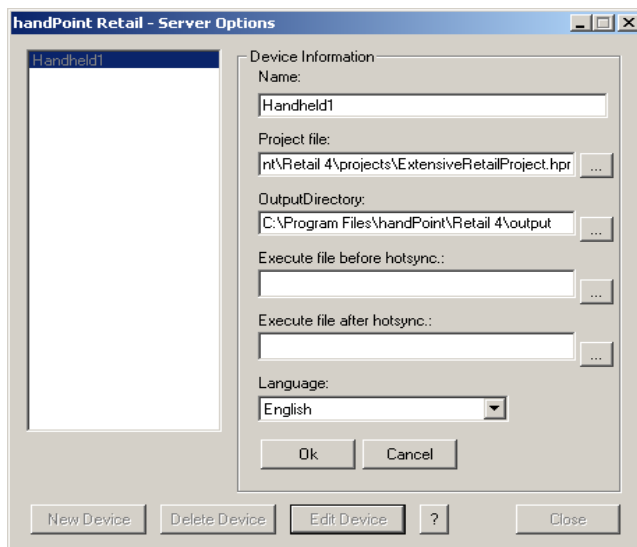
Important Note: Before you can use handPoint Retail on your Pocket PC, you have to assign a project file to the handheld and then synchronize with the PC to download the project file. You use the handPoint Retail server to assign project files to the handheld and select a folder where the output from the handheld will be saved.

Configuring handPoint Retail Server for Pocket PC

1. Open the **handPoint Retail-Server options**.

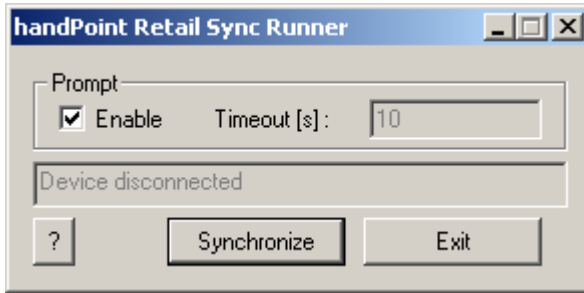


2. Select **New Device**.
3. Enter the Name of the Device. It has to be the same name that the handheld uses during an ActiveSync.

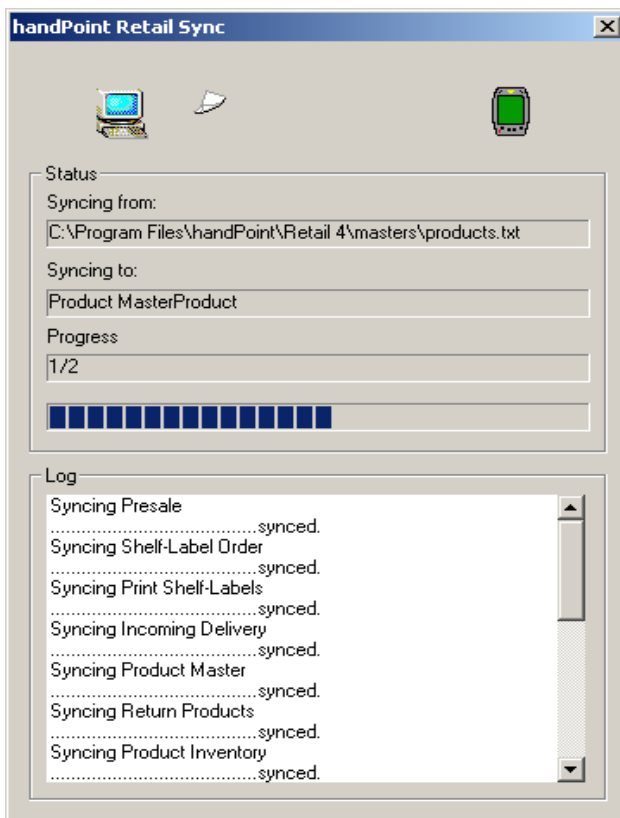


4. Browse for and select an existing project file in **Project file**.
5. Browse for and select an output directory in **Output Directory**.

6. If there are any specific files you want executed before or after ActiveSync, browse for them in **Execute file before synchronization** or **Execute file after synchronization**. Note that this is optional, you don't need to select anything here.
7. Click **Ok**.
8. When the information you have entered is correct and you have finished adding devices, click **Close**.
9. Now synchronize your handheld with your PC, by clicking the **Synchronize** button in the **handPoint Retail Sync Runner**.



10. If Prompt is enabled in the Sync Runner, a prompt will appear that says 'handPoint Retail wants to synchronize with the connected device?' Click **Ok**.
11. During synchronization, a special status window will appear which shows the status of the synchronization of Retail data in detail.



You can now use handPoint Retail on your Pocket PC.